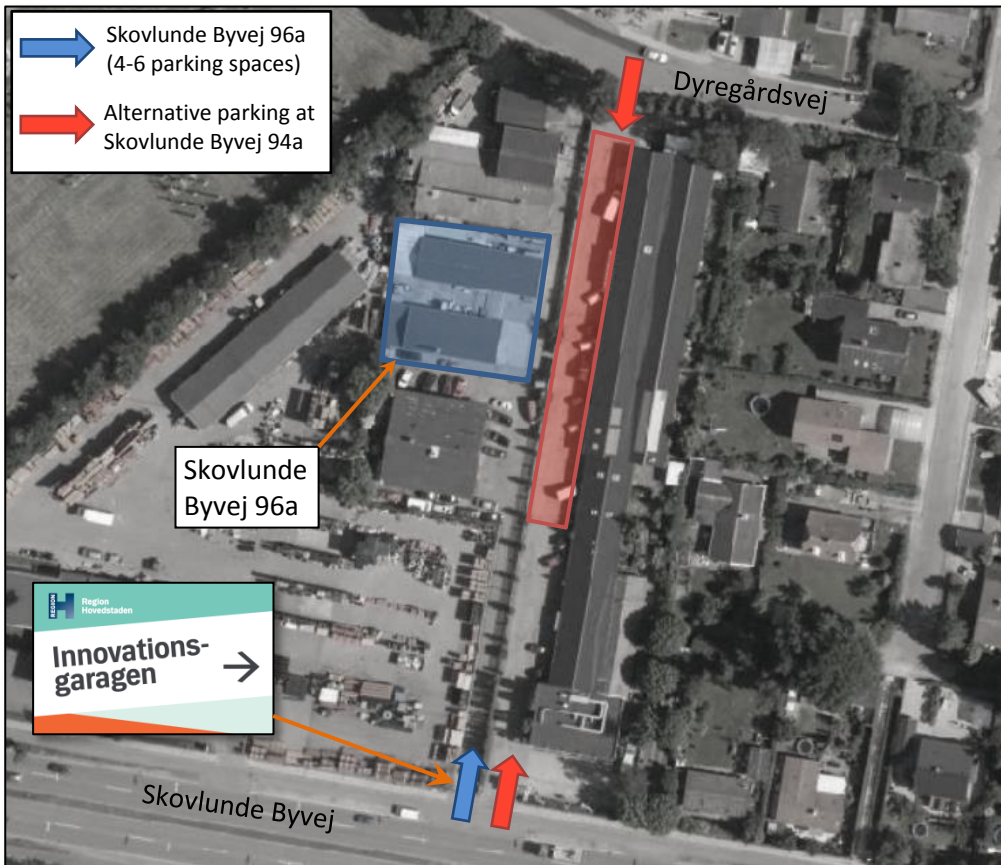


## Directions to the Capital Region of Denmark test site the Innovation Garage Skovlunde Byvej 96A, DK-2640 Skovlunde



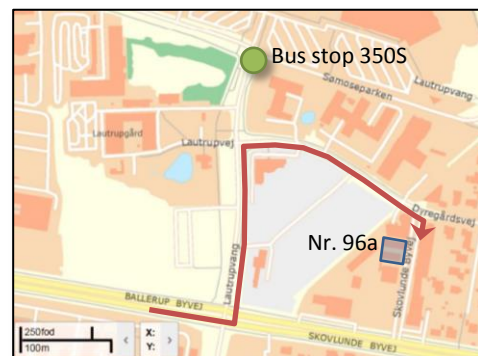
### From the east (Herlev and Copenhagen):

The Innovation Garage is on the right hand side (north) of Skovlunde Byvej. There are signs at the road to the Innovation Garage (see figure above), “Palms Auto” and “KFN Finmekanik” (our neighbors). We have limited parking at the site and alternative parking at no. 94a (“Rent-a-plant”) cf. the red hatched area on the map above. It is also possible to access no. 94a from the north by Dyregårdsvej. There is passage on foot through the fence between no. 94a and 96a right at our buildings.

### From the west (Ballerup etc.):

Make a U-turn on Skovlunde Byvej at the traffic light after the test site and follow the directions from the east above.

Alternatively, follow Lautrupvang and Dyregårdsvej to the driveway to til Skovlunde Byvej 94a, cf. the map on the right.



### Public transportation

The nearest S-train station, Skovlunde st., is about 1 km. southeast of the site.

The nearest bus stop (line 350S) is about 300 meters away at the Danish Technical University on Lautrupvang, cf. the map above right.

Please consult the public transportation guide [www.rejseplanen.dk](http://www.rejseplanen.dk) for directions and timetables.